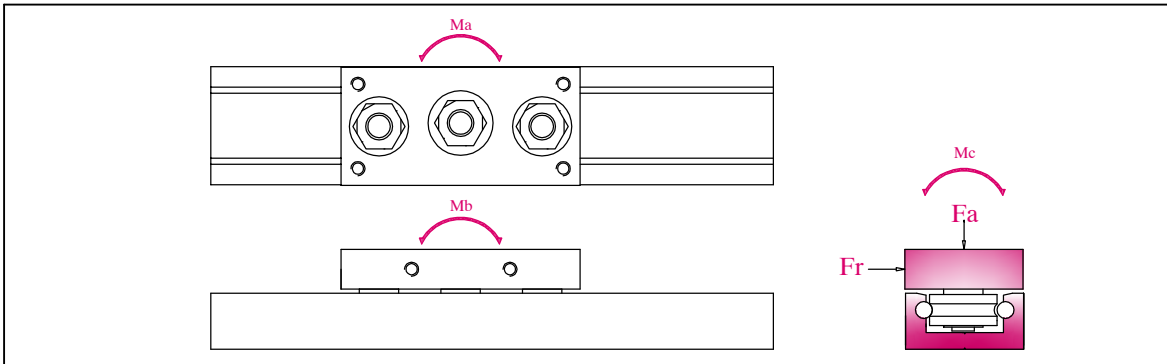
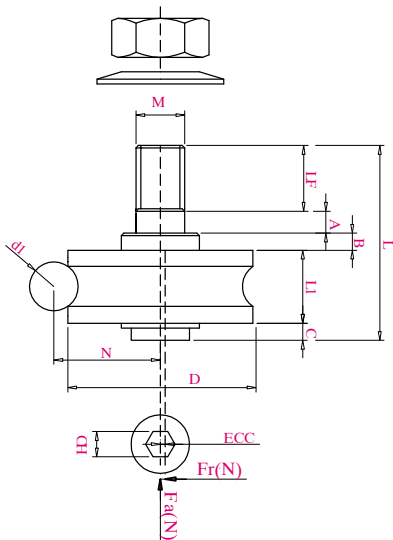


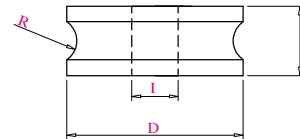
MOMENTO STATICO E CARICO LIMITE



COMPONENTI			CARICO LIMITE (N)		MOMENTO STATICO (NM)		
Carrello	Rotella	peso (g)	Fr	Fa	Ma	Mb	Mc
GC 32	AG 17E AG 17C	0.15	960	320	4	7	11
GC 42	AG 24E AG 24C	0.30	1650	480	7.2	14	25
GC 65	AG 35E AG 35C	0.80	3900	1160	26.5	47.5	81



ROTELLE AD ARCO GOTICO



Dimensioni e carichi massimi supportabili della rotella (AG).

Tipo	Rotella	L	LF	A	B	LI	C	M	N	D	ECC	CH	D1	I	CARICHI	
															ASS (N)	RA (N)
GI32	AG17E	23	5.5	5	3	8	1.5	5	10.5	17	0.5	2.5	M4	5	1700	1250
GI32	AG17C	23	5.5	5	3	8	1.5	5	10.5	17	0	2.5	M5	5	1700	1250
GI42	AG24E	28	7	6	2	11	2	8	14.5	24	0.5	4	M6	8	4350	1250
GI42	AG24C	28	7	6	2	11	2	8	14.5	24	0	4	M4	8	4350	1250
GI65	AG35E	44	11	12	2	15.9	3.2	10	20.6	35	0.75	5	M5	12	9700	4900
GI65	AG35C	44	11	12	2	15.9	3.2	10	20.6	35	0	5	M6	12	9700	4900